

## Internet Access (UniMyNet) at UniMy

- The university depends heavily upon its IT network for Teaching and Learning activities. UniMy network and internet access is officially called as 'UniMyNet'.

### Requirement

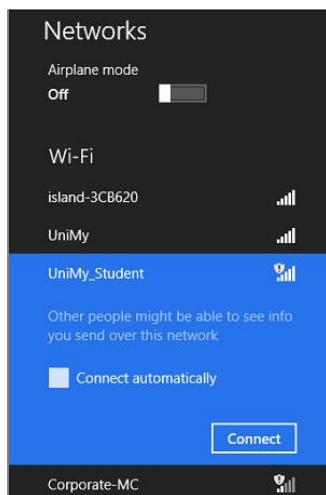
- Students will be getting a login id and password to access UniMyNet.

### Location

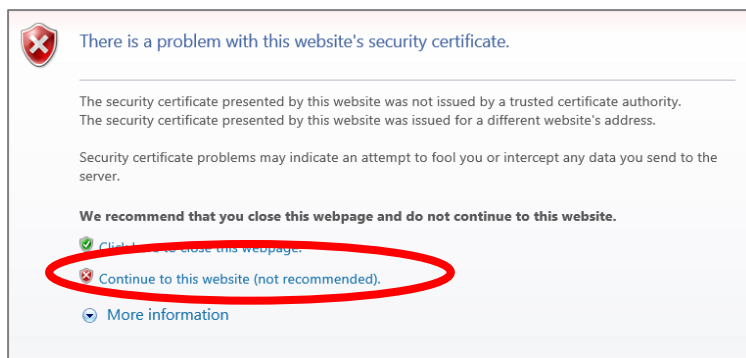
- Area of accessing UniMyNet area:
  - 1) Wifi access in campus using SSID: Unimy Student
  - 2) Multipurpose PC in library
  - 3) Computer Lab in Lecture Hall Aminudin Baki

### Steps


- Wifi Access
  - 1) Select 'Unimy Student' SSID, no password required at this stage.



- 2) A new page will appear or try to browse to any website such as google.com using Internet Explorer browser
- 3) Click Continue to this website



- 4) Enter UniMyNet username and password



The image shows a login screen titled "Authentication Required for Wireless Access". It features the University Malaysia of Computer Science & Engineering logo in the top left. The main content area is dark blue with white text and input fields. It includes labels for "User Name" and "Password", each followed by a white input box. A "Log In" button is positioned to the right of the password field. At the bottom, it says "Powered by Ruckus Wireless".

- Multiple Access and Connection
  - 1) Login to the PC using student UniMyNet username and password